

Canadian History 11 - Course Outline

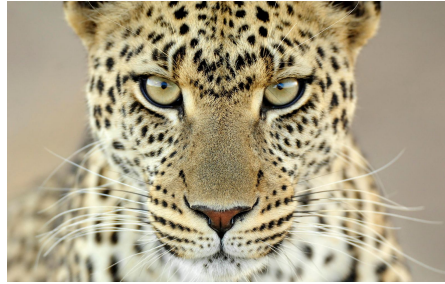
Charles P Allen High School
200 Innovation Dr., Bedford, NS B4B 0G4
Tel: (902) 832-8964 ext 7551040

Teacher: Robin Snow

Email - rsnow@hrce.ca or rsnow@gnspe.ca

Twitter - @MsSnowCPA

Website - snowhrce.weebly.com



Introduction

Canadian History 11 offers an overview of history in Canada from the pre-contact period to the present. Each unit - Globalization, Development, Governance, Sovereignty, and Justice - provide students with opportunities to examine our past in a thematic way, with each unit adding additional layers to our national story. Students will work extensively with primary sources, and will have many opportunities to develop deeper understanding of people, events, places, and ideas that interest them and have shaped the character of Canada. The course also highlights the important contributions and experiences of diverse groups and incorporates a range of diverse voices.

Assessment and Evaluation

Grades are determined based on achievement and learning of curriculum outcomes. Each outcome of the course will be evaluated multiple times and in a variety of ways. If a student feels he/she has not demonstrated his/her best work on an assessment, it is his/her responsibility to discuss additional opportunities with me in a timely manner. Grades will be entered in PowerSchool on a weekly basis. All submitted work must be the original work of the student. Students will be evaluated based on the following breakdown:

Globalization	30%
Development	15%
Sovereignty	10%
Governance	15%
Justice	20%
Independent Study	10%

During each unit, students will be assessed in two ways:

Formative Assessments - opportunities to practice skills and explore concepts, and to submit work for the purpose of receiving feedback to guide learning. These assessments are for feedback purposes only, and are not included in a student's final grade. Formative assessments include: exit slips and check-ins, in-class activities, discussion and conferences, responses, and outlines.

Summative Assessments - used at the end of a learning period and provides an opportunity for students to demonstrate their learning of specific outcomes and topics. These are formal events and are used to calculate final grades. Extensive outlines, detailed rubrics, and completed exemplars will be provided for summative assessments. Summative assessments include: tests and quizzes, assignments, seminar presentations, document based questions and source analysis, independent studies, essays and written responses, and graphic organizers.

Work completed throughout the semester makes up 75% of a student's final mark, with the exam comprising the other 25%.

Student Responsibilities and Expectations

- Attendance in Canadian History 11 is critical. You are expected to attend all classes. If you are absent, it is your responsibility to gather work that was missed. In-class handouts or materials will be posted in Google Classroom at the beginning of class when they are read, viewed, or referred to
- You are responsible for monitoring your attendance and academic progress in PowerSchool. Grades will be updated on a weekly basis
- You must be on time for class
- Extensions on assignments must be arranged more than 24 hours prior to a due date and must be negotiated for a valid reason. Summative assessments will NOT be accepted after a deadline unless you have discussed alternatives for completion with me. All assessments are due at the start of class on the due date. Due dates and assessment outlines/rubrics will be posted in Classroom and on my website in advance.
- Canadian History 11 requires commitment and responsibility to achieve the outcomes. It is your responsibility to be prepared when you come to class, to demonstrate active engagement and open-mindedness, and to participate in a mindful and respectful way
- All work shared or submitted must be the original work of the student. Plagiarism is a serious offense and will result in communication with home and administration, as well as a mark of zero and a requirement that the work be completed a second time. Academic dishonesty will also result in the loss of exam exemption
- Cell phones and other electronic devices will NOT be used during class time, unless you are invited to do so for academic purposes
- Respect for peers, teacher, and the learning environment is expected at all times